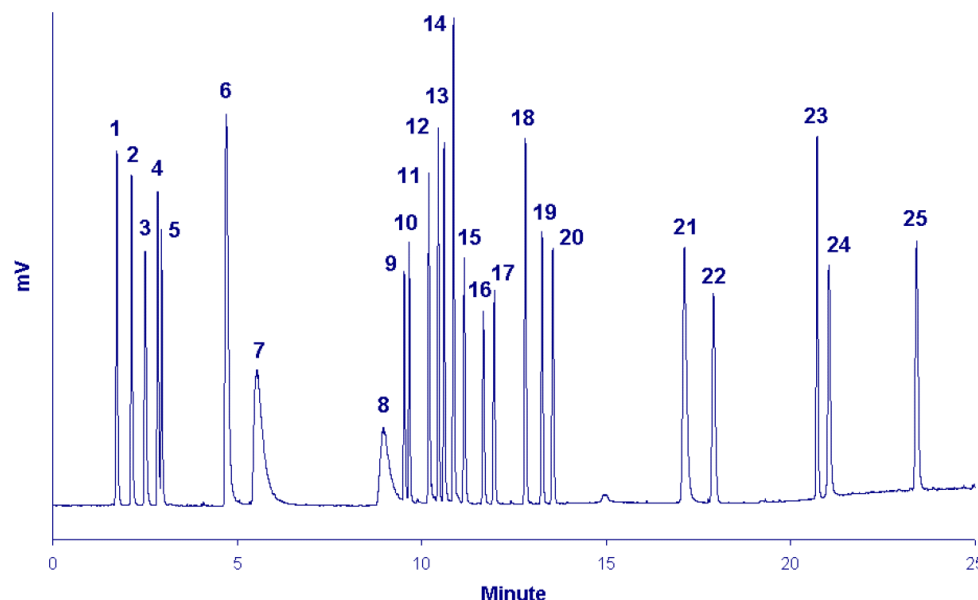


Global HPLC/LT-ELSD Method for the Simultaneous Analysis of Polar and Non-Polar Compounds present in Natural Products or Food



Multimodal Stationary Phase HPLC/LT-ELSD Chromatogram of the Direct and Simultaneous Analysis of 25 Polar and Non-polar Compounds.

Standard mixture: 1- Potassium, 2- Alanine, 3- Glucose, 4- Saccharose, 5- Kestose (Trisaccharide), 6- Malic acid, 7- Tartaric acid, 8- Citric acid, 9- Cyanidin 3-glucoside, 10- Gallic acid, 11- Procyanidin B1, 12- Protocatechuic acid, 13- Catechin, 14- Epicatechin, 15- Epigallocatechin gallate, 16- Caffeic acid, 17- Naringin, 18- Sinapic acid, 19- Ferulic acid, 20- p-Coumaric acid, 21- Myricetin, 22- Resveratrol, 23- Hesperitin, 24- Quercetin, 25- Kaempferol (mixture in H₂O/MeOH, 50:50, acidified with 5% formic acid)

Injection volume: 2µL

Column: 2 x Macherey Nagel **NucleoDur PolarTec** columns (1.8µm, 2.0 x 150mm) in series, 50°C

Flowrate: 0.2mL/min

Eluent: A: H₂O + 0.3% Formic acid - B: ACN + 3% Formic acid

Gradient: 0-1,5 minutes 100% A, 3 minutes 40% B, 3-12 minutes 40% B, 15 minutes 70% B, 15-25 minutes 70% B

Detector: **SEDEX 90LT**, 50°C, 3.5Bar