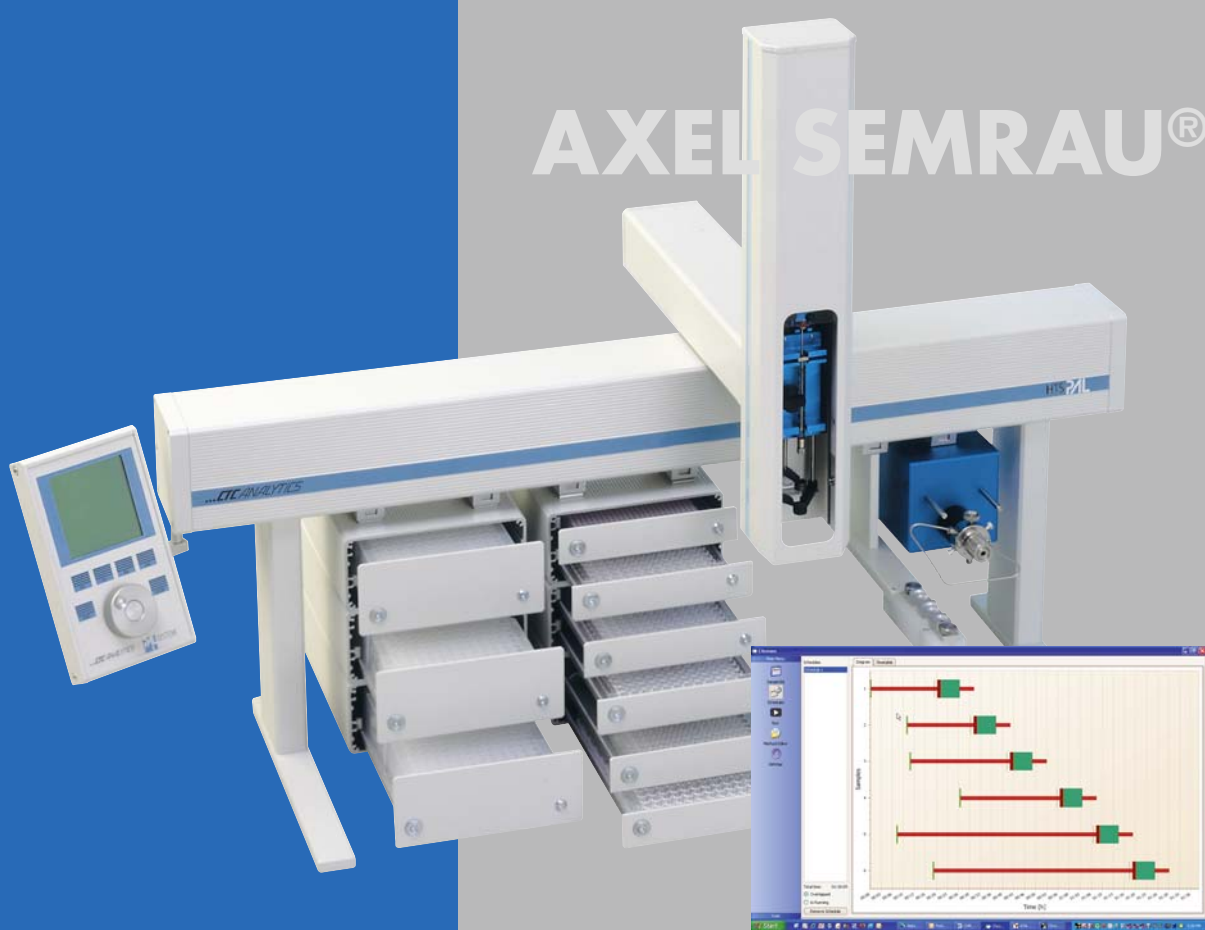


SOFTWARE

AXEL SEMRAU®



Chronos Version 3.1

Mastersoftware for all CTC Sample Handlers

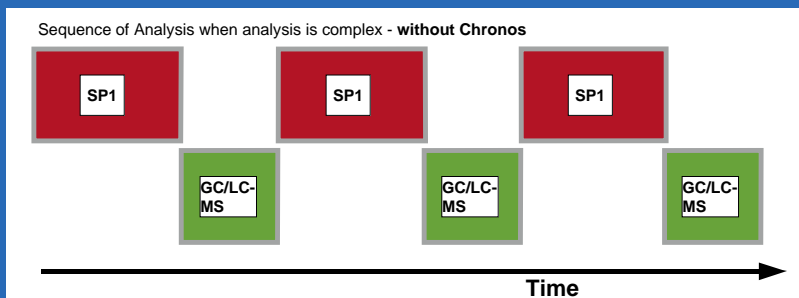
Chronos Mastersoftware is an ideal solution for automating complex sample preparation steps on the CTC PAL.

Software Integration with data systems such as ChemStation™ or Xcalibur™ assures seamless functionality with existing systems. Chronos not only exchanges information with other systems, but also controls complete processes and optimizes individual work steps with intelligent time-management resulting in significant improvement of system throughput.

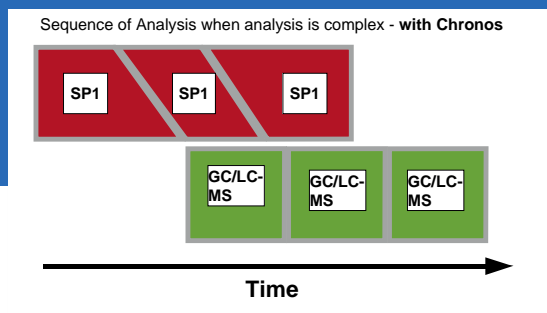


Axel Semrau®

Chronos for Sampler and Analytical System



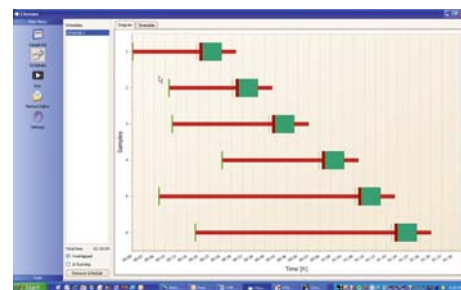
Timing optimization with staggering by Chronos



Time is money!

In most analytical labs expensive detectors and analyzers wait for elaborate sample preparations. The consequence is long waiting periods between samples.

Chronos provides optimization work that pays off. The software package is compatible with practically all systems using CTC PALs and controls sampler and detection devices.



Automation

New trends in chromatography such as Fast-GC and UHPLC lead to shorter and shorter run times. Simultaneously, more and more sample prep tasks are migrating to the sample handlers. Today simple liquid sample injections or headspace analysis are complemented more often with dilutions, standard additions, derivatizations, SPE process and others.

For this reason many GC-, GC/MS- and LC/MS systems are inefficient because of standstill and waiting periods. The analytical process traditionally works serially where the run time has to be complete before the next sample can be prepared. The detector system has then to wait for the sample prep steps to be completed.

Exactly in those instances Chronos goes to work. Chronos optimizes as Mastersoftware the interaction of sampler and detector system by staggering events (see graph above!) The result is a maximal load factor for each component in the system and significant time savings or throughput increase.

Chronos Open Software

Chronos controls the sampler and the MS-Data system as with DANI Master Lab, Agilent ChemStation or Thermo Xcalibur from one sample list. The sample list is freely configurable and it can be saved as xml-database. The sample list can be imported from any LIMS system and can be exported to a sample list for post processing of analytical data.

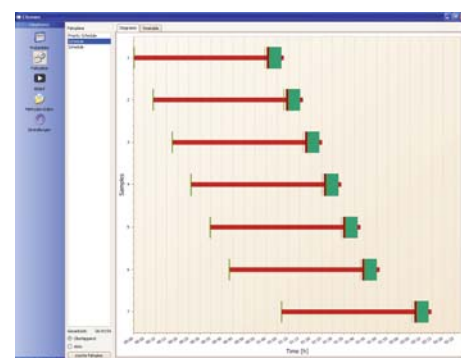
Chronos-Methods provide maximal flexibility. All features of the CTC PAL can be implemented. Complex sample prep steps can be programmed with ease in a simple series of sub-steps. Standardization of all sample lists makes operation simpler for the end-users.

Time Savings with Chronos

A run time reduction of up to 70% is not unusual. The time saved depends on acquisition time, sampling time and number of samples in a sequence but Chronos can calculate accurately time saved.

Visualization of sample sequence

After submitting the sample list Chronos will automatically calculate the optimized schedule for the run times. The result of this calculation will be displayed graphically (see fig. below!). The actual status will always be displayed either in form of the graph or in a table. During the run time a log file can be created and saved for later review.



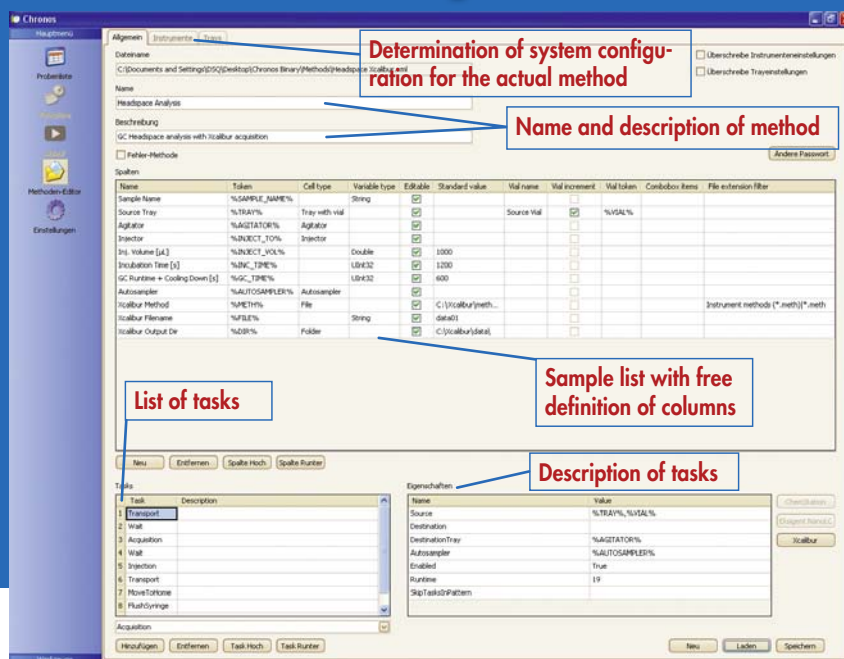
Schedule for seven samples in a headspace GC-MS analysis using CombiPAL

Maximum Flexibility

Chronos

Method Editor

With Chronos, methods can be prepared in a straightforward simple way by using prepared "Tasks". The sample list can be created with the method editor in a flexible but still simple way. Subsequently it can be passed on to the analytical system.



All encompassing functionality

- Import and export of sequences in DANI Masterlab, ChemStation and Xcalibur or cvs-format
- Control of multiple PALs
- Support of Dual PAL systems
- Support for liner exchange in a ATAS Linex system
- programmability of Valco valves over a serial interface
- customizable sample list for easy user interface adjustments
- management of multiple sample lists
- management of priority samples
- call up external programs for data interpretation from within the method
- reading of gravimetric data from a Mettler balance
- support for Gilson dilutors for sample dilutions
- support for SPME fiber changer
- support for ITEX-2 functions
- support of 2D bar code reader
- ability to send SMS messages
- control of peristaltic pumps for liquid handling
- control of SPE cartridge change module for automated SPE

Examples of Applications

GC and GC/MS

- Headspace
- SPME
- ITEX-2
- Derivatization e.g. Metabolomics protocols
- Support of Preventive Maintenance in Process (PMIP)
- automatic H53-extraction
- on-line SPE
- Dual PAL applications

HPLC and LC/MS

- multi-dimensional chromatography
- matrix separation using SPE
- derivatizing with fluorescence tags
- fast separation of active ingredient in pharma research

Summary Conclusions

Chronos optimizes the complex work flows of the sample handler (CTC PAL) and reduces waiting times of all components in GC(-MS) or LC(-MS) systems. This is possible because Chronos through its intelligent algorithms affects parallel handling of multiple samples without compromising precision and accuracy of the final results. This replaces the usual concept of serially processing of samples. Chronos introduces an innovative way to enter the world of parallel, staggered sample centric work flow that raises efficiencies significantly.

Specifications

Applicable Chromatography and MS Data Systems

- Xcalibur 1.4, 2.0, LC, GC
- GC/LC/MSD ChemStation
- ChromPerfect 5.5.6
- Integration of ATAS Evolution Software for the optic injector
- Integration of EZChrom Vs. 3.21, Clarity Vs. 3.0 and higher
- Integration of Analyst 1.41 and higher

CTC PAL Samplers:
HTS PAL, HTC PAL, TWIN PAL, CombiPAL, Dual PAL, GC PAL

The simultaneous control of multiple PALs, a Twin PAL or a Dual PAL can be realized with Chronos.

System requirements:
Minimum Pentium III, 1,3 GHz,
Windows XP, Windows 7.
For each PAL 1 serial port (RS 232) or over network



Axel Semrau®

Axel Semrau® is one of the largest Trade and Service Organization in Germany engaged in analytical instrumentation.

For 30 Years Axel Semrau® sells and supports specialized solutions for chromatography and mass spectrometry with a steadily growing staff. Besides analytical systems for LC and GC Axel Semrau® has an expanding line of its own products in software and Odor applicator control for the natural gas industry.

A competent team of analytical chemists, informatics specialist and software engineers develops in close cooperation with end-users new products such as Chronos to improve efficient processes in the laboratory.

Axel Semrau GmbH & Co. KG

Stefansbecke 42, 45549 Sprockhövel, Germany
Telefon +49 2339/1209-0, Fax +49 2339/6030
info@axel-semrau.de

The company undergoes regular external monitoring. The last inspection related to the quality of its technical service to customers which achieved the mark 1.79 (1 = highest) in a survey conducted by the TÜV (German Technical Inspection Association) in the German state of Saarland.

Axel Semrau is certified by DEKRA in accordance with ISO 9001:2000 since May 2008

80% of our workforce has completed training in science and technology. By continuous further employee training we guarantee a high level of advice and support.

We can adapt our solutions to specific customer requirements if desired.



We sense good chemistry ...



www.axel-semrau.de