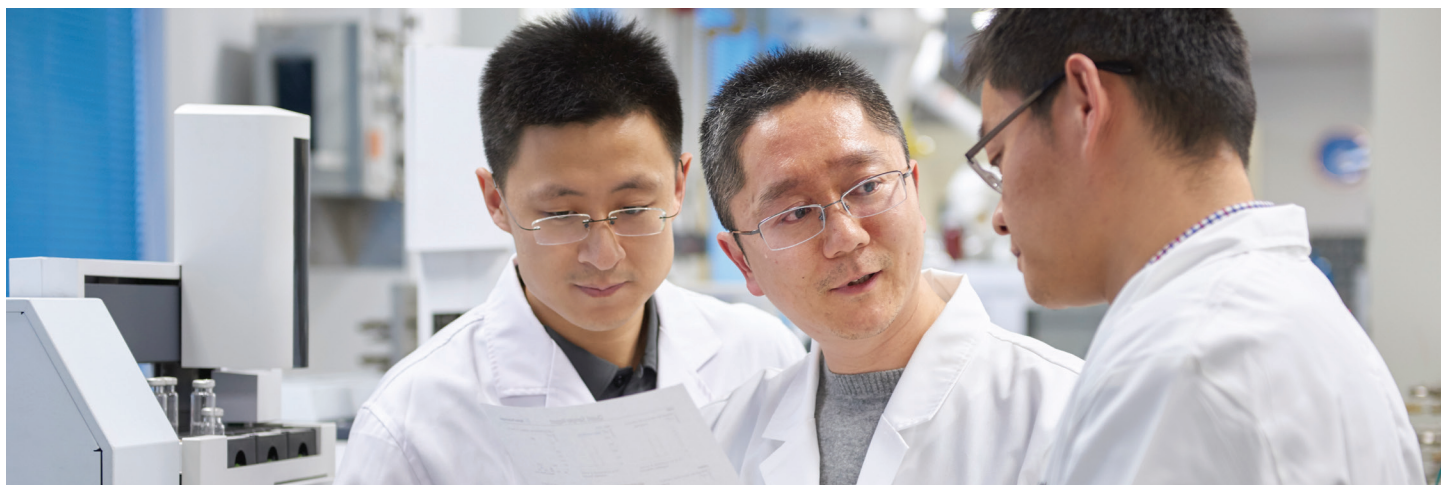


Intelligent and Reliable: A New Outlook on Routine GC

Agilent 8860 gas chromatography system





How Much Does an Hour of Unplanned Downtime Cost You?

Unexpected instrument downtime causes delays in getting critical sample reports. You might compensate by spending extra time in the lab—or even calling in at night or over the weekend. Even worse, unplanned repair expenses can stress your already tight budget even further.

The new Agilent 8860 system lets you take back control

Why the Agilent 8860 GC? Because it enables you to work smarter—not longer and harder. Its built-in intelligence features help you avoid unplanned downtime and minimize costly operational surprises.

Intelligent GC: Instruments that work as hard as you do

The 8860 GC is just one of a new breed of instrument that monitors system health, tracks injections, and alerts you to leaks. That means you can plan your work—including maintenance—rather than react to unexpected downtime.

In addition, the instrument features core microchannel-based electronic pneumatic control (EPC) architecture. Unique to Agilent, this design protects against gas contaminants—such as particulates, water, and oils—improving reliability and longevity.

Give yourself one less thing to worry about

The 8860 GC embodies the future of routine GC. It combines Agilent quality, reliability, and performance with innovations that maximize lab uptime and minimize unplanned repair expenses.

Perfect for a broad range of routine GC applications, the 8860 GC delivers consistent, repeatable results—day after day.

Routine Analysis That's Anything But Routine

Intuitive touch screen interface

Gives you real-time access to instrument status and information.

Home screen

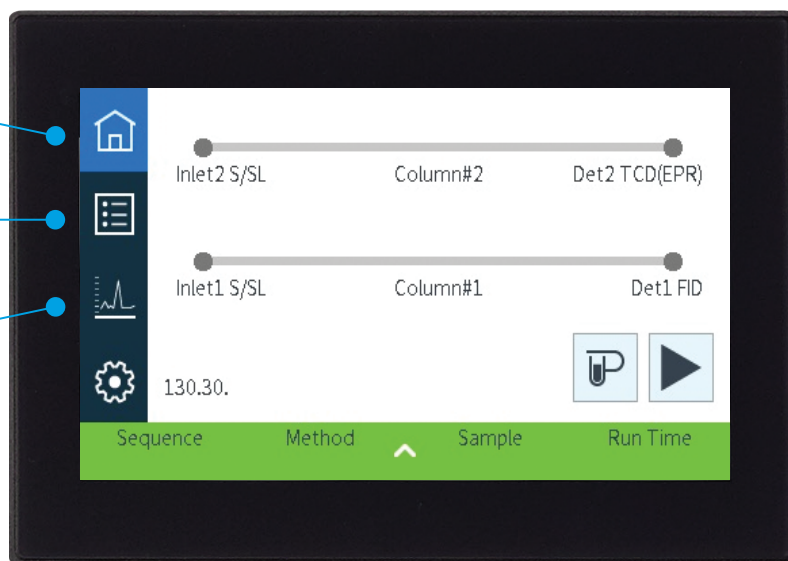
Provides at-a-glance system configuration and flow path status.

Instrument actuals screen

Allows you to customize and identify frequently used setpoints for quick accessibility.

Plot screen

Confirms that analyses are progressing as intended.



Browser interface

Proactively minimizes unexpected downtime without having to stand at the instrument.

- Gain access from any browser (tablet, laptop, or PC).
- Edit GC methods and sequences without the need for a data system.
- Call up Diagnostics, Maintenance, Logs, and Help menu items.
- Review logs, or consult the user manual, right at your desk.
- Check instrument status and run diagnostics from any place within reach of your secure lab network.



A New Milestone for Routine GC Analysis

Based on core platform designs of the Agilent 7890 GC—the world's most widely used GC system—the 8860 GC elevates routine GC analyses to new levels of performance, reliability, and cost effectiveness.





Performance you can count on... every day

- Built-in Agilent reliability tested to 8890 GC standards.
- Temperature and pressure compensation for more stable chromatographic performance.
- Optional electronic pneumatic regulation (EPR) for easy, precise manual operation with digital display.



Low cost of ownership

- Hydrogen or nitrogen alternate carrier gas capability minimizes operating costs.
- Helium conservation module and hydrogen sensor help reduce gas costs.
- Sleep/wake modes reduce gas and energy consumption.



Intelligent capabilities with remote status monitoring

- Built-in diagnostics and maintenance functions help avoid unplanned downtime.
- Browser interface allows method and sequence editing and access to logs.
- Help menus offer easy access to user documentation.
- Connectivity lets you check status, or run diagnostics, from anywhere within your network.



More consistent results, less rework

- Electronic pneumatic control (EPC) ensures repeatability of retention times and peak areas
- Digital electronics keep your setpoints constant from run to run, and operator to operator



Rock-solid consistency with retention time locking (RTL)

- Match retention times of any GC system to another Agilent GC system with the same column and method using EPC and Agilent data software.
- Compare results between systems in one lab or at different locations.

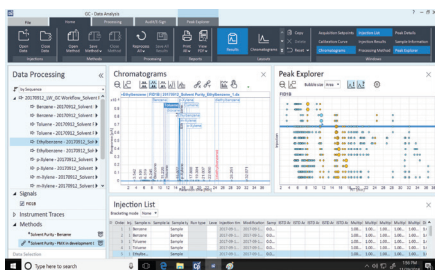


Configuration capabilities to meet your needs

Install up to 2 inlets, 3 detectors, and 3 valves to address a broad range of routine analysis.

A Complete GC Workflow That Helps You Get from Where You Are to Where You Want to Be

For over 50 years, Agilent has led the way with industry-changing GC and GC/MS instruments, consumables, software, and more. And every step of the way, your goals become *our* goals: Improving user experience, laboratory operation, and business success.



Agilent OpenLab CDS Capture, analyze, and share data

OpenLab CDS

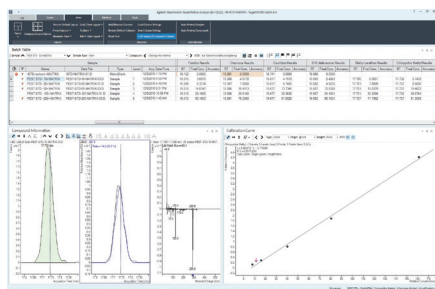
- Highest efficiency in production labs
- Intuitive Help & Learning speeds onboarding
- Best choice for data integrity

OpenLab CDS ChemStation edition

- Most comprehensive support of analytical workflows
- Best solution for R&D and method development

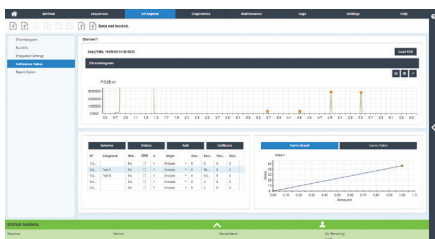
OpenLab EZChrom edition and EZChrom Compact

- Extensive automation toolkit
- Simplified client/server solution



Agilent MassHunter software Streamline operations and boost productivity

- Enable powerful data collection, processing, and reporting
- Breeze through application-specific workflows with comprehensive GC and GC/MS single quadrupole support



DA Express data analysis software Simplified data analysis

- For routine GC applications that do not require extensive data processing or compliance support
- Easily integrate signal data, build calibration curves, and create result reports
- Accessible through the GC browser interface
- Does not require a chromatography data system



Mass spectrometry compatibility

Improved confidence in detection and identification

The new 8860 GC is compatible with the Agilent single quadrupole GC/MS system.



Agilent sample preparation solutions

Reliably extract and concentrate samples from complex matrices

- Simplify sample preparation with prepackaged Agilent Bond Elut QuEChERS kits.
- Produce cleaner extracts using Agilent Bond Elut SPE.



Agilent Gas Clean solutions

Reduce column damage and sensitivity loss

- Ensure a clean gas line with Gas Clean filters.
- Sensitive indicators alert you when filters are saturated and need replacing.



Agilent Inert Flow Path

Reliable, consistent inertness

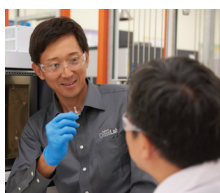
- Decrease adsorption along the flow path for accurate, reproducible detection of trace-level analytes.
- Achieve the parts-per-billion, parts-per-trillion, or lower detection levels that today's analyses demand.



Agilent J&W GC capillary columns

Consistent performance and reliability

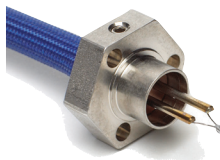
- Inert consumables, including columns and liners, for optimal signal-to-noise performance.
- Deliver the lowest bleed levels, highest inertness, and tightest column-to-column reproducibility.



Flexible repair options

Get your lab back to work

- **On-demand repairs:** When an instrument needs diagnosis or repairs, our experts will get it operational again.
- **Service plans:** Get your current problem fixed—and all other issues covered for one year.
- **Service Center repair:** Ship to us, and we'll send a replacement. Or, we'll fix and return it.



Genuine replacement parts for Agilent detectors

Replacement part authenticity counts

- Minimize background interference, low signal counts, and response changes.
- Maintain reliable performance, consistent signal output, and maximum uptime.
- Backed by the Agilent service agreement—plus a 90-day warranty from the date of shipment.

Agilent CrossLab: Real insight, real outcomes

CrossLab goes beyond instrumentation to bring you services, consumables, and lab-wide resource management. So your lab can improve efficiency, optimize operations, increase instrument uptime, develop user skill, and more.



Learn more:

www.agilent.com/chem/gc

GC column selection tool:

<http://selectgc.chem.agilent.com>

GC/MS instruments:

www.agilent.com/chem/ms

Inert flow path:

www.agilent.com/en/promotions/inertflowpath

Buy online:

www.agilent.com/chem/store

Find a local Agilent customer center in your country:

www.agilent.com/chem/contactus

U.S. and Canada:

1-800-227-9770

agilent_inquiries@agilent.com

Europe:

info_agilent@agilent.com

Asia Pacific:

inquiry_lsca@agilent.com

India:

india-lsca_marketing@agilent.com

This information is subject to change without notice.

© Agilent Technologies, Inc. 2019
Published in the USA, February 1, 2019
5994-0475EN

